



## **Our Company :-**

SMART is one of the leading engineering and construction company in Saudi Arabia. We deliver reliable and innovative solutions to energy, construction and infrastructure projects.

## **VISION :**

Our vision is to satisfy the clients with our operational excellence, quality products/ services and customer satisfaction

## **MISSION :**

Our mission is to enhance our capabilities/ potentialities and to become a prominent business conglomerate and to set ways for the success of Saudi Vision 2030

## Subsidiaries



## Sister Companies

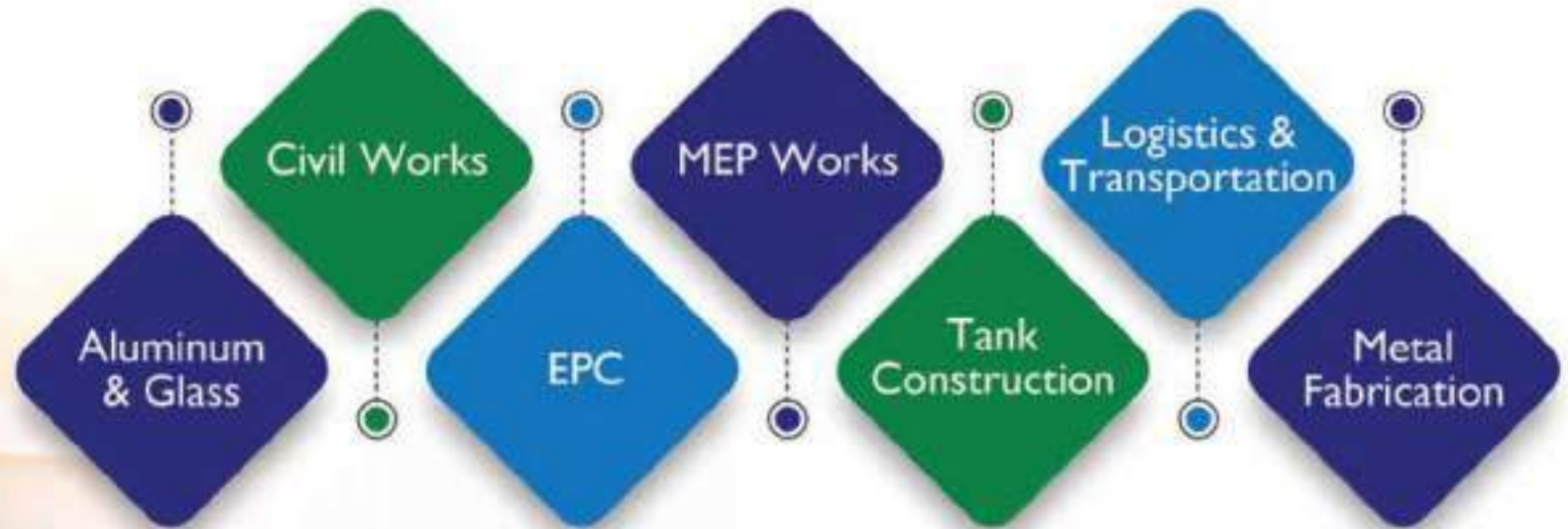


sesab international





## WHAT WE HANDLE ...



## WORKING SECTORS



OIL & GAS



POWER  
GENERATION



INFRASTRUCTURE



FERTILIZER

PETRO  
CHEMICAL



WATER  
TREATMENT  
PLANTS



CEMENT



MINING



## PRODUCTS AND SERVICES

### CIVIL AND INFRASTRUCTURE WORKS:

- Residential construction
- Road construction/site preparation and development
- Building & community housing maintenance
- Repair and rehabilitation
- Surface preparation and coating
- Backfilling, excavation and piling works
- Pipeline repair and reconditioning
- Fire, cooling and drinking water systems,
- Water storage and distribution systems,
- Drainage systems, and water systems, storm-water,
- Pavements, sewer lines,
- Underground water tank, pipelines.

### ELECTRO-MECHANICAL ERECTION WORKS: ELECTRICAL WORKS

- Cable laying & termination
- Control panel installation & commissioning
- Lv&mv electrical component installation
- Control room services
- Fire alarm systems
- Instrumentation

### MECHANICAL WORKS

- Piping
- Motor & pumps erection
- Welding and Insulation works
- Fire protection networks

### HVAC SYSTEM WORKS

- Ductworks & insulation works
- Complete central ac systems
- District cooling systems

## PRODUCTS AND SERVICES

### OPERATION & MAINTENANCE :

#### 01. Mechanical Works

- Machining services
- Heat exchanger re-tubing
- Weld-overlay cladding services
- Heat exchanger cleaning services
- Valve field inspection services
- Actuator maintenance services
- Plant support services
- Valve and system upgrade services
- Shutdown maintenance services
- Annual maintenance contract AMC.

#### 02. Civil Works

- Building concrete pads
- Cutting and installing dock doors
- Repairing floors
- Remodelling offices
- Adding on to buildings
- Foundations Works
- Pouring driveways and curbing
- Replacing metal door panels and frames
- Installing stairways and handrails
- Repair of roofing

## PRODUCTS AND SERVICES

we are is locally base distributor and provides all types of consumable quality products for civil, electrical & mechanical construction and industrial works.



## PRODUCTS AND SERVICES

### HARDWARE & SAFETY EQUIPMENTS

- All type of hardware valves, nozzles, pipe and fitting.
- All type gloves.
- Safety helmets, shoes, belts, goggles, cover.
- Road barriers, safety cones fence, & safety pillars.



### MACHINERIES POWER TOOLS

- Mobile cranes, forklift construction equipments .
- Welding machines.
- Repair & maintenance and rentals of lifting equipments.
- Drilling machines, spray paint guns, jig saw, jack hammer.

## PRODUCTS AND SERVICES

### Rectangular Duct and Fitting:

- Straight ,Lined , Double , Elbow duct.
- Radius elbow with splitter.
- Radius elbow with square throat ers.
- Y-branch.
- Tee with turning vane.
- Offset.
- Duct reducer.
- Rectangular to round duct.
- Take off 45 degrees.

### Plenum box with square damper:

- Plenum box for square diffuser.
- Liner plenum box.

### Dampers:

- Fire dampers curtain type.
- Motorized fire/smoke damper.
- Backdraft & pressure relief damper.
- Volume control damper.
- Sound attenuators.
- Variable air volume box.
- Access door.

### Louvers:

- Sand trap louver.
- Drainable louver.
- Architecture louver.
- Acoustic louver.

## PRODUCTS AND SERVICES

### Main Products:

- Aluminum doors
- Bifold systems
- Aluminum windows
- Sliding systems
- Skylights-rooflights
- Curtain walls
- Fire resistance & bullet proof systems
- Railing systems
- Insulated Glass System
- Point support Glass Fin Walls
- Laminated and Tempered Glass
- Frosted Glass
- Reflectiob Glass
- Switchable Smart Glass
- Curved Glass
- Solar Low - E Glass

## PRODUCTS AND SERVICES

### HEAVY EQUIPMENT RENTAL SERVICES

Speed supply is one of the rising and most respected equipment supplier and rental service provider in kingdom of saudi arabia. Our services manage a fleet of heavy and light industrial equipment. we support numerous local projects that require rental equipment, complete fleets of smaller and larger cranes, transport vehicles and earth moving equipment.



Dump Truck



Generator



Welding Machine



Vacuum Tanker



Tower Light



Wheel Loader



Compactor



Cranes



Forklift



Excavator



Buldozer



Grader



Trailer FlatBed



Dayna Truck



Buses



Water Tanker



Pickup



Coaster



HIACE Bus



Boom Truck

## LARGEST PROJECTS EXECUTED

Largest Projects Executed				
Project Name	Project Scope	Client	Value	Completed
REMAL HOUSING COMPOUND, AL KHOBAR	Civil, Finishing and MEP Works	AL BASSAM GROUP	108,238,000	YES
LIWAN LAND DEVELOPMENT PROJEC	Land Development	DAEM REAL STATE CO (AL RAHBI) AL QASIM (BURADAH)	52,627,500	YES
NESAJ RESIDENTIAL COMPOUND, RAKKHAH	Civil and Finishing Works for 400 VILLAS WITH SPORTS COMPLEX	AL FOZAN	86,872,800	YES
PC RESIDENTIAL COMPOUND, KING FAISAL AIR ACADEMY, AL MAJMAAH	INFRASTRUCTURE WORK (INCLUDING ALL UNDERGROUND UTILITY)	ARABIAN CASTLES FOR GENERAL CONTRACTING Co. (ACGC)	73,320,000	YES
44 VILLAS INITIAL AND FINAL DEVELOPMENT SHUBAILY, QATIF	Civil, Finishing and MEP works for 44 VILLAS	ROWAD AL MADAR	73,250,128	YES
NABIAH LAND DEVELOPMENT PROJECT, DAMAM	Complete Infrastructure Work Including Underground Utility Services	ROWAD AL MADAR	45,700,480	YES

On Going Project				
AL HASA INTERNATIONAL AIRPORT EXPANSION	Long Term Parking, Apron, Service Road, Equipment Handling and Parking Area	DACO/CAD	56,422,800	FINAL STAGE
AL MOUWASAT POLYCLINIC AZIZIAH, AL KHOBAR	Civil, Finishing and MEP Works	AL MOUWASAT GROUP	78,000,000	ON GOING
WATER PIPE LINE, DAMAM	Excavation and Infrastructure Work and Asphaltting	NWC	52,000,000	ON GOING
RAYISRABIGH PIPE LINE IWPT-02	Civil Work	AL KHORYF/YANBU	16,800,000	ON GOING



## CONSTRUCTION CAPABILITIES

### PROCUREMENT CAPABILITY

Our highly qualified and experienced procurement support and buyers have at their fingertips, not only the resources of Saudi Arabia and the Middle East, but also the resources in the International Market. Having such vast purchasing resources ensures that entirely any client requirements can be satisfied.

- **Methodology in Material Storage & Handling**

Material storage and handling unit is staffed by proficient personnel and operators to ensure proper inventory of materials as far as minimum level, and shelf-life of various products are constantly monitored and properly identified in individual racks. Special care is always given to mishandling of any items.

- **Detail of Timelines, Design and Working Conformity of Materials and Equipment**

Our Procurement Unit in coordination with QA/QC Unit will be responsible for the appropriateness, design, working conformity of materials and/or equipment's sourced.

The Procurement will be required to render regular reports on the status of materials/equipment's placed on order and monitor the movement of the materials taking into consideration the critical project milestone, thus avoiding any delay in project execution.

## CONSTRUCTION CAPABILITIES

### TECHNICAL CAPABILITY

Our technical process consists of:

- Target value design
- Cost control
- Cost estimating
- Constructability reviews
- Last planner / short-interval planning
- Life cycle cost analysis
- Scheduling
- Subcontractor selection
- Material procurement

### PROJECT MANAGEMENT

Our project management consists of:

- Concepts and terminology
- Software project management plans
- Structure of project management plan
- Project responsibilities & matrix
- Team structures and Project planning
- Work breakdown structure
- Communication management
- Project scheduling
- Project management tools



## CONSTRUCTION CAPABILITIES

### PROJECT SCHEDULING

We are construction services use a standard project controls system which can be modified to accommodate preference or specific requirement determined by the client/project owner. We use the latest version of primavera database program and develop four (04) levels of scheduling and controls the engineering, procurement and construction (EPC) activities.

We are construction services project schedule incorporates the contract completion date and key milestone dates and will indicate the relationship of the activities of the client/project owner.

- Level 1 milestone schedule depicts major progress milestone.
- Level 2 milestone schedule displays typically 50/ 200 project activities, including restraints and dependencies.
- Level 3 activity schedule contains typically 1000 activities, and is sorted by construction work package.
- Level 4 detail schedule tracks due dates for project drawings, tasks and installed quantities.

We schedule the entire project, from start to finish. By identifying key milestones, we will be able to drive towards project completion in an organized and predetermined manner.

## CONSTRUCTION CAPABILITIES

### MATERIAL TAKE-OFF (MTO)

Following award of the project, the project management team shall endeavour on checking the required material take-off lists within 30 days for feedback to client's representative.

The Lists Shall Be In The Following Format:

- Project description of each item
- Project quantity
- Technical specification
- Client's material system stock number, if applicable

### TECHNICAL SOFTWARE

Computer Software/System Use For Construction Services:

- Financing the project, and accountancy
- Microsoft dynamics epr software estimation
- b2w ver.2015 project management software
- Budget and cost management
- Microsoft dynamics epr software
- Planning and scheduling the project work
- Primavera p6 ver.2015 and b2w ver.2015
- Design & drawing
- Revit, autocad, micro station v8, 3d max
- Staad 2007, sap 2000, prokon, etap ver.9
- Etap study
- Carrier hap



## QUALITY POLICY STATEMENT

- Our fully identifies and conforms to the needs of our customers and improving customer satisfaction.
- Monitor and review our service provision and processes, identifying potential errors and corrective actions.
- Provide extensive staff training, promoting a 'do it right first time' attitude towards quality.

It is the responsibility of aig management to demonstrate the necessary commitment and leadership to create a culture of high-quality standards and continuous improvement:

- We ensure that all contractors apply quality standards which are fully compatible with those of smart -
- We shall provide adequate resources and training to ensure work is carried out safely and professionally.
- We shall ensure that all quality incidents are fully notified, investigated and that corrective action is carried out.
- We shall ensure that a comprehensive program of reporting and audits is developed to measure eness performance against set goals and objectives, and that these are formally reviewed by aig management to ensure the effectiveness of the quality management system.

## QUALITY POLICY STATEMENT

Smart Quality Management System Shall Be 'Hands On',  
Focused and Based on The Following Five Principles:

### Focus on Operational Tasks

- Do It Right First Time
- Assess Risks and Prioritize Resources Accordingly
- Knowledge Management Is Shared
- Accessible Empowered and Accountable Quality Team.

### Continuous Improvement



## SAFETY CAPABILITY

### HSE POLICY

It is our policy that accident Prevention be a prime concern of all employees. This includes the safety and well-being of our employees, subcontractors, suppliers, partners and clients, end-users, as well as the prevention of wasteful, inefficient operations, and damage to property and equipment.

### APPLICABILITY

This HSE policy applies to all employees of smart regardless of position within the company. The safety rules contained herein apply to all subcontractors and anyone who is on a company project site. Every employee is expected to comply with the hse policy, as well as osha health and safety standards.

### IMPLEMENTATION

HSE policy supports six (06) fundamental means of maximum employee involvement:

- Management commitment to safety.
- Weekly tool box safety meetings at all job sites.
- Job safety training.
- Job hazard analysis
- Audio and visual Safety
- Various incentive awards



## RESOURCES, EQUIPMENTS & LOGISTICS

### EQUIPMENT ASSETS

BUS, 48 SEATER	: 02	FORKLIFT TRUCK 5T	: 02	PLASTERING MACHINE	: 02
TOYOTA COASTER	: 04	FORKLIFT TRUCK 10T	: 01	ASSORTED POWER TOOLS	: 145
MINI BUS	: 02	CONCRETE MIXER	: 04	SHEAR CUTTER	: 02
DUMP TRUCKS	: 35	CONCRETE VIBRATORS	: 25	BENDING MACHINE	: 02
FLAT BED TRUCK	: 25	GENERATOR 50 KVA	: 02	JIG SAW	: 12
KIA MINI TRUCK	: 01	GENERATOR 250 KVA	: 01	CIRCULAR WOOD SAW	: 15
FLAT BED TRUCK 2.5T DYNA	: 03	DIESEL WELDING MACHINES	: 03	LOCK FORMER	: 10
WATER TANKER	: 06	ELECT. WELDING MACHINES	: 30	SCAFFOLD SYSTEM COMPLETE	: ITEM
PICK-UPS	: 12	COMPACTOR	: 03	GAS CUTTING SETS	: 15
TOWER CRANE	: 01	PLATE COMPACTOR	: 06	POWER TROWEL	: 05
HYDRAULIC CRANE 35T GROVE	: 02	AIR COMPRESSOR 450 CFM	: 09	MARBLE POLISHER	: 06
BULL DOZER CAT D8	: 02	AIR COMPRESSOR 750 CFM	: 01	THEODOLITE	: 10
GRADER	: 02	ASPHALT CUTTER	: 01	DUMPY LEVEL	: 04
JCB	: 03	ANGLE GRINDERS	: 12	CHAIN BLOCK	: 03
POCLAIN	: 06	DRILL MACHINES	: 24	REBAR CUTTING & FABRICATING	: 08
FRONT END LOADER	: 01	OXYGEN & ACETYLENE	: 02	TILE CUTTING MACHINE	: 10
BACK HOE	: 02	JACK HAMMER	: 12	SPRAY PLASTER MACHINE	: 02
BOBCAT UNILoader	: 04	SANDING MACHINE	: 15	AIRLESS SPRAY MACHINE	: 05

## PROJECT PHOTOS

### CONSTRUCTION WORKS



REMALHousing Compound - Al-Khobar

## PROJECT PHOTOS



## PROJECT PHOTOS



## PROJECT PHOTOS



Mouwasat Project



## PROJECT PHOTOS



Mouwasat Project



## PROJECT PHOTOS

### CONSTRUCTION WORKS



Water Desalination plant project - Jubail



Private residential villas



## PROJECT PHOTOS



## PROJECT PHOTOS

### CONSTRUCTION WORKS



Industrial Gas Plant

## PROJECT PHOTOS



## PROJECT PHOTOS



Al Hasa Project

## ROAD WORKS

## PROJECT PHOTOS



## CORPORATE CLIENTS OF SAUDI ARABIA

أرامكو السعودية  
Saudi Aramco

صدارة  
Sadara



المؤسسة العامة لتحلية المياه المالحة  
Saline Water Conversion Corporation

الهيئة الملكية للجubil و Yanbu  
Royal Commission for Jubail & Yanbu  
Royal Commission in Jubail



سابك  
SABIC

بترو رابغ  
Petro Rabigh

ACWA POWER  
أكوا باور

الشركة السعودية لشراكات المياه  
Saudi Water Partnership Company



معادن  
MA'ADEN  
شركة التعدين العربية السعودية  
Saudi Arabian Mining Company

ساسرف  
SASREF

التصنيع  
TASNEE

عمليات الخفجي المشتركة  
AL KHAJJI JOINT OPERATIONS

الصحراء  
sahara

سبكيم  
Sipchem

الشركة السعودية للكهرباء  
Saudi Electricity Company

سامرف  
Samref

نwc  
المياه الوطنية

FARABI  
PETROCHEMICALS



Nesma  
& Partners  
نسما  
وشركاهم

## CORPORATE CLIENTS OF SAUDI ARABIA



















### Our Vision.....



Sesab International is dedicated to safely producing the highest quality steel products for our customers, delivering them on-time and providing them with outstanding service. It is our intention to operate ethically with all constituents, maintaining fair and honest relationships. From the floors of both plants to the executive offices, Sesab International is devoted to achieving excellence in all we do on behalf of each stakeholder every day.



sesab

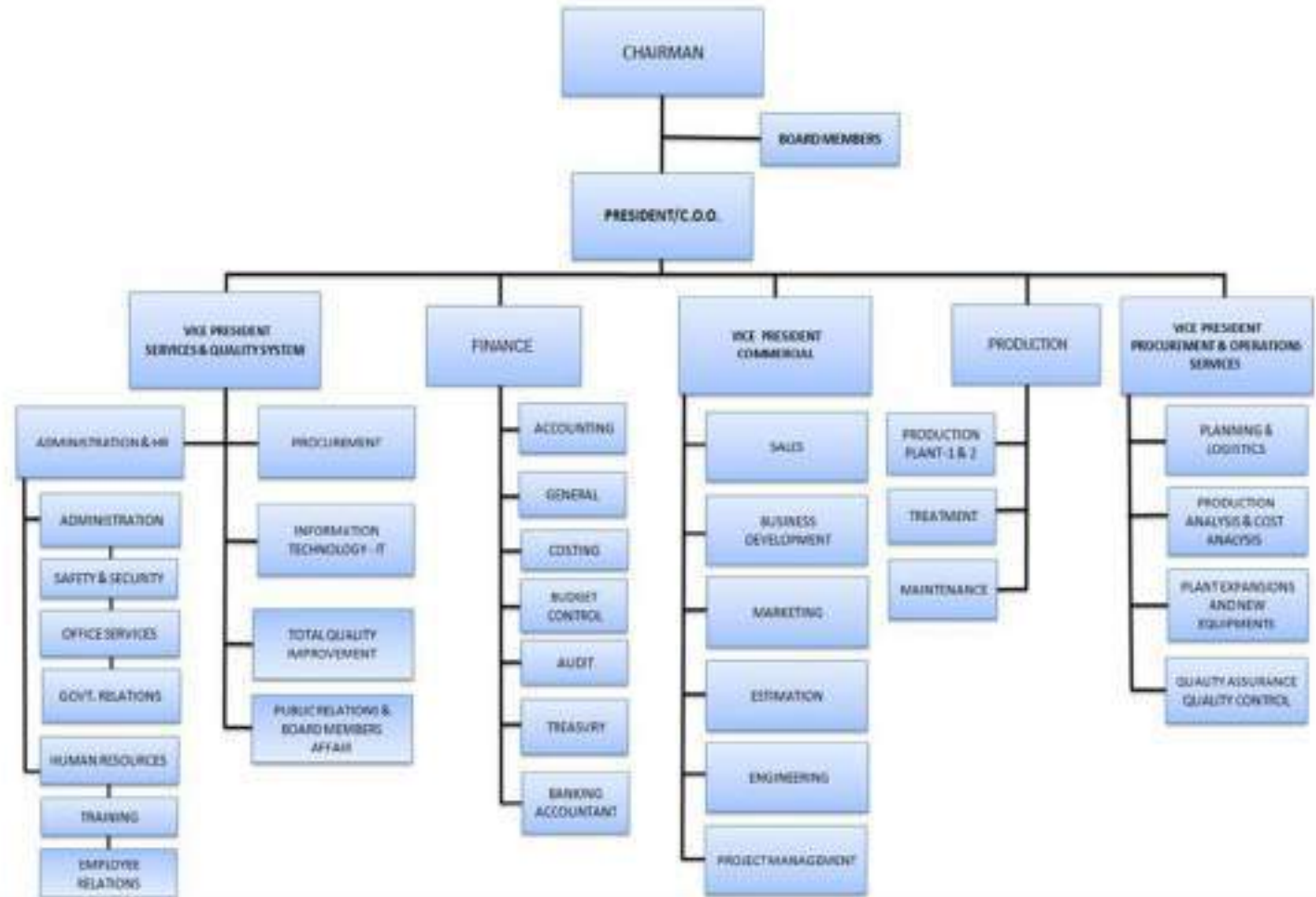
## BRIEF INTRODUCTION....

- **Sesab International is a 100% Saudi Arabian Limited Liability Company.**
- **Two Production facilities with state of the art machinery. Jeddah Industrial City (Phase 1 and Phase 5).**
- **Licensed Under Ministry of Industry and Electricity.**
- **ISO 9001: 2008 CERTIFIED**
- **Sesab is an approved vendor of SAUDI ARAMCO / SABIC / SEC / SWCC / NPCC / SAMREF / BOROUGE / QATAR PETROLEUM / PETRORABIGH / SINOPEC / SONATRACH / etc.**





R Stamp -Jan'13



OUR PRODUCTS...CONT'D



SHOP & SITE BUILT STORAGE TANKS



LADDERS



FLOOR & STAIR HANDRAILS



PLAIN & SERRATED GRATINGS

## OUR COMPETITIVE EDGE

- ✿ New facilities with state-of-the-art machinery.
- ✿ State-of-the-art Engineering facilities.
- ✿ Competitive Pricing.
- ✿ Aggressive Procurement strategies resulting in short delivery cycle.
- ✿ Highly skilled work force.
- ✿ CCTV monitoring.
- ✿ Web access to customers for progress monitoring. *(being developed)*.



## OUR PRODUCTS...



State of the art CNC machinery at Sesab Plant No.2....



CNC BEAM CUTTING & 3 AXIS DRILLING LINE  
(Working range 1300 mm X 700 mm)



ROLLING MACHINE  
(CAPACITY UPTO 60 MM)



CNC PLASMA CUTTING, PUNCHING & DRILLING



SECTION ROLLING MACHINE  
Beams/Channels/Angles/Pipes

SESAB'S OWN GRATING MANUFACTURING LINE



### SESAB MANPOWER. . .

➔ Engineers	:	20
➔ QA/QC	:	22
➔ Welding Engineer	:	04
➔ Surveyors	:	02
➔ Engineering staff	:	149
➔ Procurement	:	04
➔ Production	:	405
➔ Marketing & Sales	:	04
➔ Administration	:	15
➔ Finance & Accounting	:	08
➔ Others	:	<u>16</u>
➔ Total	:	<u>653</u>

- o Sesab International has agreement with local manpower agencies to supply manpower at short notice.
- o Sesab also has work visas and can manage to recruit and get skilled workers within 6 to 8 weeks.

Gesab International for Industry and Contracting  
**Machinery List**

S.No.	Description	Qty	Capacity	Year	Supplier
1	Kaltenbach CNC Band Saw Machine -KBS 1301	1	1300 X 760 beam cutting	2008	Germany
2	Kaltenbach CNC Drilling Machine - KDX 1215	1	3 axis spindles 5 to 50 mm dia	2008	Germany
3	Kaltenbach CNC band saw machine - KBS 400	1	400 X 300 beam cutting	2007	Germany
4	Kaltenbach KBS 1051 DG Band Sawing Machine	1	1030 x 500 mm	2011	Germany
5	Kaltenbach KDM 1015 D3 Drilling Machine	1	3 axis Carbide spindles 8-40 mm dia	2011	Germany
6	Kaltenbach KC 1201 Copying Robot	1	1200x450mm	2011	Germany
7	Manual band Saw Machine	2	Up to 300 mm I beams	2004	Italy
8	CNC Plate cutting, drilling & marking center	1	Plate size 2500 X 6000 up to 100 mm Drilling diameter 9 / 50mm mms	2008	Germany
9	C N C Plate gas cutting machine	1	Plate size 2000 X 6000 up to 1500	2007	Sweden
10	Kings Land Hydraulic Five Station Steel Model Multi 125	1	Angle shearing 150 x 15 mm Flat shearing 350X25 Punching 35 / 25mm	2005	Belgium
11	Kings Land Hydraulic Five Station Steel Model Multi 80	1	Angle shearing 130 x 13 mm Flat shearing 330X20 Punching 29 / 15mm	2005	Belgium
12	MG - Plate rolling machine MH 3851	1	3 meter width / 65 mm thick / 1890 dia	2008	Italy
13	Projection Welding Machine - Grating	1	F&B width 25 to 65 mm / panels 1 m m	2004	Korea
14	Notching Machine	1	For grating panels	2004	Korea
15	Circular saw machine	2	For grating panels	2004	Korea
16	Sharpening Machine Sangin	1	For dia 450 circular blade	2004	Korea
17	Plate Shearing Machine HGS Hydraulic HGS 3100-II	1	Plate width 3000/8mm	2005	Turkey
18	Plate Shearing Machine HGS Hydraulic HGS 3100-10	1	Plate width 3000/10mm	2005	Turkey
19	CNC Plate bending Machin (PRESS BRAKE)	1	Plate width 3000 / 16 mm	2007	Turkey
20	Portable punching machine	3	Punching 22 dia / 12 mm	2007 - 10	Japan
21	Radial Drilling Machine MAT 80mm Model 3725A	1	Up to 55 mm	2005	China
22	Section rolling machine	1	Rolling angle 70x7 Plate 125x30 Pipe 50mm dia	2005	China
23	SWAW stick Welding machine	31	300-400 Amps	2005	Italy
24	Miller Mig Welding Machine Milematic 350	7	25 - 400 Amps	2005	USA
25	Lincoln Mig Welding Machine CV 400 LP 72	18	400 Amps	2005	USA
26	ESAB A2 Automatic welding machine - SAW	1	1000 Amps	2008	Sweden
27	Stick welding machine	2	2400 Amps	2008	Nelson
28	TIG Welding machine	1	340 Amps	2008	Lincoln
29	Electrode heating oven	1	15 KG	2007	China
30	Magnetic drill MAB 450	6	35 mm	2006	Germany
31	Rotabroach cutter	5	65 mm	2006	UK
32	Victor Gas Cutting Machine T K Model 200E	2	up to 65 mm	2005	Germany
33	Over Head cranes 16 Ton - Demag	2	16 Ton	2010	Germany
34	Over Head cranes 10 Ton - Demag	8	10 Ton	2008	Germany
35	Over Head cranes 5 Ton - Kone	4	5 Ton	2005	Finland
36	Forklift 7 Ton	2	Caterpillar 7 Ton	2007	USA
37	Forklift 5 Ton	2	Caterpillar 5 Ton	2005	USA

Sesab International for Industry and Contracting Machinery List					
S.No.	Description	Qty	Capacity	Year	Supplier
38	Cooling Tower Type 150 R/T	1		2005	Korea
39	Air compressor - COMP AIR	2	144 CFM	2004	Germany
40	Air drier	2	388 CFM	2004	Germany
41	Air receiver	3	6000 Lts 8 bar	2004	Germany
42	Grit Blasting Units	8	100 lbs	2007	USA
43	Airless spray painting unit - NXT 3000	4	32 MP / HR	2008	USA
44	Disc grinders	35	5"		Japan
45	Disc grinders	25	9"		Japan
46	Pencil grinders	10	Various		Japan
47	Portable Electrode drying oven/ Guver	25	9kg - 10 kg		India, China
48	Magnetic drill MAB 200	4	132mm	2010	Germany
49	Hydraulic Press, 1300 x 450, Non-Movable Cylinder	1	100 T	2010	Turkey
50	Hydraulic Press, Non Movable Cylinder	1	100 T	2010	China
51	Hydraulic Iron Worker, IW-1005 - Sunrise	1	100T	2010	Taiwan
52	Drill Press/ Jet	3	125mm	2009-10	Germany
53	Hand Pallet Truck 2T	3	2T		
54	Cut Off saw Mach	4	10" Dia	2009-10	
55	Bench Grinder	2	8"	2009-10	
56	Hyd. Iron Worker, Model IW-125 SD Sunrise	1	125 T	2009	Taiwan
57	Daw Section Robing Machine	1	Angles/Sections upto 200mm	2009	Italy
58	HYD.SWING BEAM SHEAR NO.	2	3100MM X 20 MM	2010	Turkey
59	AIR COMPRESSOR	4	825 CFM	2010	Germany
60	RADIAL DRILLING MACHINE	2	Up to 60 mm	2011	Italy
61	PORTABLE COMPRESSOR	1	825 CFM	2011	USA
62	GEN.SET (OLYMPIAN)	1	24 KW , 79 AMPS	2011	UK
63	HORIZONTAL BAND SAW MACHINE	1	750 X 550 mm	2011	Turkey
64	GANTRY TYPE CUTTING MACHINE	1	combris CXL 2500/CNC	2011	China
65	LATHE MACHINE	1	dia 300mmX 2000 mm length	2011	China
66	HEATING OVEN	1	30-1200 DEG	2010	Germany
67	PAINTING MACHINE	3	XTREME X60	2011	
68	5 TONN ABUS CRANE	3	5 TONN	2012	Germany
69	MARKING MACHINE MC 2000T	2	280 X 160 X 261 MM	2011	Spain
70	HIGH PRESSURE CLEANER	1	HD 9/80L	2011	
71	SAND-BLASTING MACHINES	8	200 LTRS	2011	Taiwan
72	2 PAIR ROTATOR	1	6000 KGS (6 TON)	2012	Switzerland
73	HYDRAULIC STEEL WORKER	1	Angle shearing 200 x 200X30 mm Flat shearing 380X30 Punching 40 DIA X 32 MM	2011	Turkey

## ENGINEERING & OTHER SOFTWARE. . . .

Engineering Software :

Design : [STAADPRO](#), [TANK](#).

Detailing : [TEKLA \(X-Steel\)](#), [STRUCAD](#), [BOCAD](#), [AUTOCAD](#).

Project Management Software :

[Microsoft project](#).

Fabrication Management Software :

[Stru M.I.S](#)

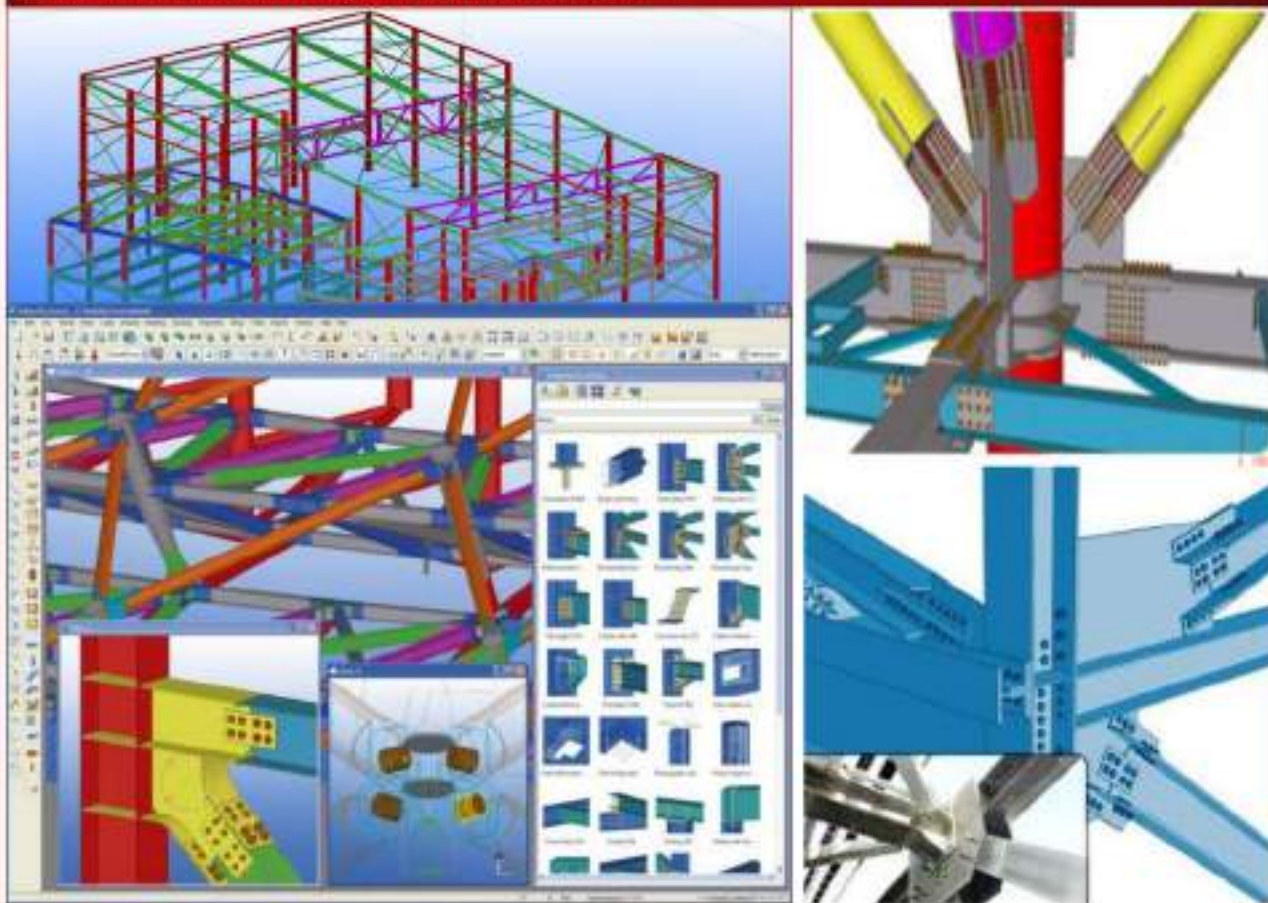
## Engineering Capability...

- Sesab offers a complete in-house detailing & engineering services.
- Detailing in compliance with International standards and Customer's specifications.
- Sesab has two associate engineering offices in India.
- Engineering Manpower details:

ENGINEERING MANPOWER DETAILS			
DESIGNATION	JEDDAH OFFICE	ASSOCIATE OFFICE Delhi India	ASSOCIATE OFFICE Mumbai India
Engineering Manager	1	..	..
Estimation Engineers	2	4	3
Design/Detailing Engineers	9	69	26
Checker	1	10	4
Auto CAD Operator	2	22	10
<b>Total</b>	<b>15</b>	<b>105</b>	<b>43</b>



TEKLA 3-D MODEL OF A STRUCTURE...



#### Heater 3D view

Sesab International has experience to fabricate the complete Heater structure which includes Radiant Panels and supporting structures. These structures also includes support for Ducts/ Pipes / Stacks as seen in the model here.

These kind of structures are very complex and require close tolerances during fabrication. Sesab has fabricated such heaters and platforms including Ducts/Piping Support structures for a prestigious project "Petrologistics" located in Houston Texas, USA and the erection was carried out without any mismatch.



#### Heater 3D view

Circular heaters 8 Nos. for the Jubail Export Refinery Project awarded to Sesab International.





## SESAB IN AMERICA

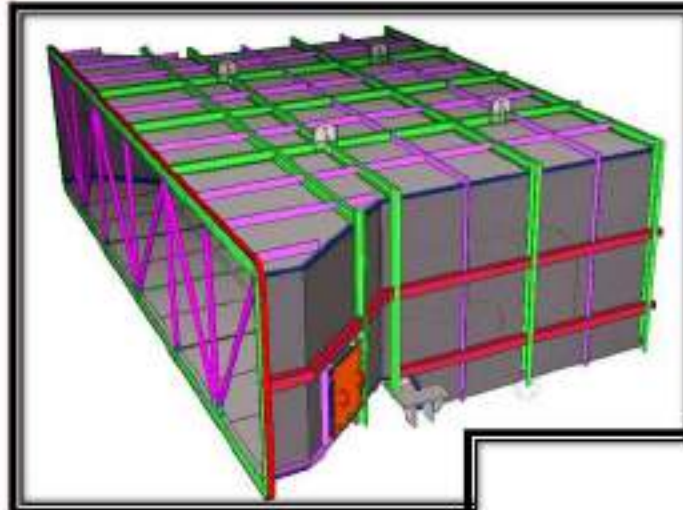
- ✧ Project : Reactor Charge Heater, Texas USA
- ✧ Customer : Selas Fluid Processing Corporation
- ✧ End User : Petrologistic - USA
- ✧ Scope of Work :  
Shop Detail Drawings, Supply of Materials,  
Fabrication of :
  - Panelized Radiant Steel (Heater Casing
  - Duct to ID Fan
  - Stack & Support
  - Structural Steel

The plant will convert propane into propylene and be the largest propane dehydrogenation plant in the world.

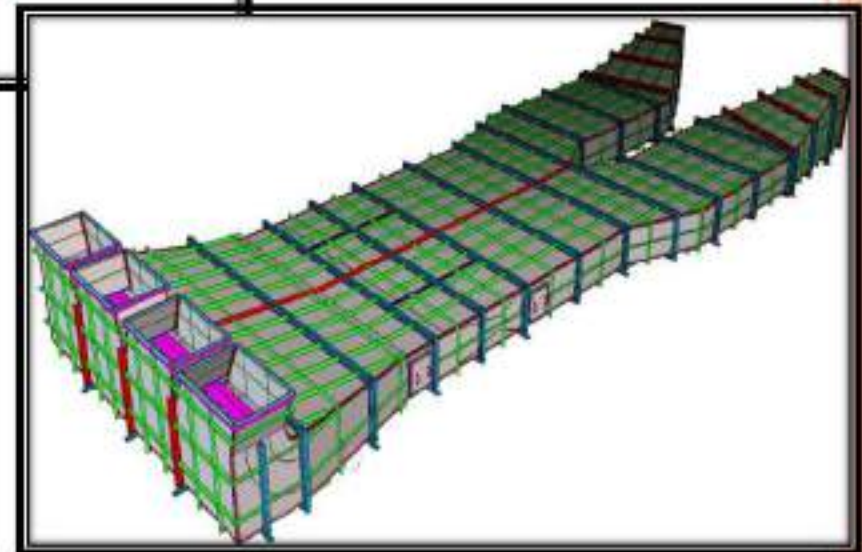
Petrologistics Project Site in USA



sesab



Ducts fabricated by Sesab  
for The Jebel Ali Power  
Plant-UAE



sesab

ONE OF OUR EXPORT PROJECTS....  
PL PROPYLENE PLANT, TEXAS USA



sesab



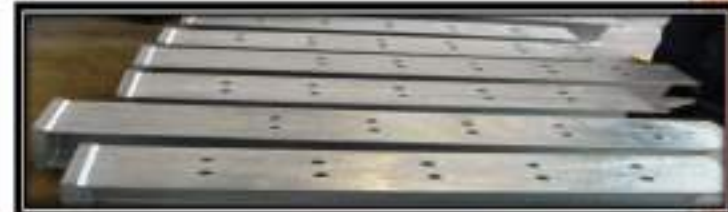
VARIOUS PROJECT PICTURES – FABRICATION BY SESAB



MEDIUM & HEAVY STEEL STRUCTURES UNDER  
FABRICATION AT SESAB INTERNATIONAL PLANT



Steel Structures Fabricated by  
Sesab International



## SECTORS SERVED

Oil & Gas.  
Petrochemical.  
Power & Desalination Plants.  
Steel Plants.  
Aluminum Smelters.  
Cement Plants.  
Airports and Sea Ports.  
Poultry & Dairy Industry.  
High Rise Buildings.



## MAJOR ARAMCO PROJECT



Project : Khursaniya Producing Facilities - Saudi Arabia

Customer : Snamprogetti - Italy

End User : Saudi Aramco

Scope of Work :

- Preparation of Shop and Erection Drawings, Fabrication, Supply and Painting of Structural Steel Items :
  - Light, Medium, Heavy and Extra Heavy Structures.
  - Gusset Plate and Stiffeners.
  - Ladders with and without Cage.
  - Handrails.
  - Grating Panels - Customized, Stair Treads.



## SESAB IN EMIRATES

Project : Jebel Ali Power & Desalination Station- UAE.

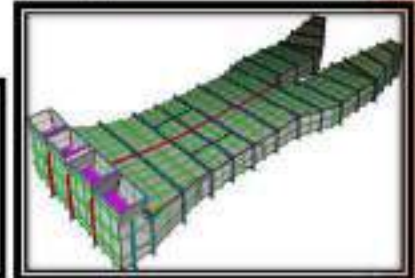
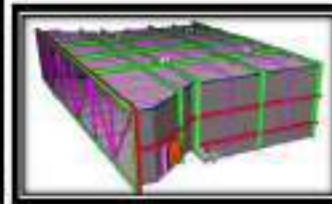
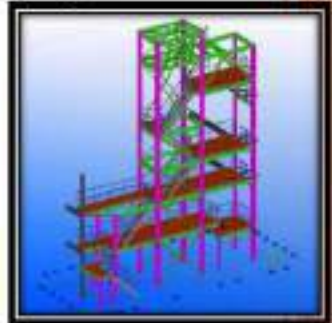
Customer : STF – SpA – Italy

End User : Dubai Electricity & Water Authority (DEWA)

Scope of Work :

Preparation of Shop & Erection Drawing, Fabricate, Supply and Painting of Structural Steel Components :

- Main Service Steel Structures
- Supporting Structures for Economizer & Super heater.
- Air & Flue gas Ducts.
- Supporting Structures for deaerator.
- Structures for Elevator
- Enclosure ( Furnace Roof and Furnace Floor grid )



sesab

## SESAB POULTRY HOUSES. . .

Besides the products shown in the previous slides, Sesab International also has got the expertise in the field of Poultry farms. Sesab is providing designing, detailing, supply, fabrication and construction of Poultry Houses including all equipments e.g. Feeders, Drinkers, Fans and Shutters, Evaporative cooling pads, Brooders and Heaters, Air Inlets, Tunnel Doors, Fill Systems, Feed Bins, Incinerators, Lighting systems, etc.

Light control is very important in modern poultry farms. Proper light control enables the owners to reap benefits by achieving excellent production goals especially in rearing farms. With its unique design Sesab International has gained success in building light tight and insect proof structures for poultry farms.

Sesab International has built poultry houses in Hail, KSA and is currently involved in supply & construction of 248 chicken houses for Almarai.



sesab

## SESAB INTERNATIONAL : CONSTRUCTION DIVISION PROJECTS

Project : Construction of Maintenance Workshops for refueling aircrafts at Prince Sultan Airbase

Customer : Royal Saudi Air Force

End User : Ministry of Defense & Aviation

Scope of Work :

Design, Supply, Erection & Commissioning of aircraft hangars.

Span : 85 Metres - Free span.

Height : 34 Metres

Length : 86 Metres

Hangar doors : 20 Metres High X 75 Metres wide



sesab

## SESAB INTERNATIONAL : CONSTRUCTION DIVISION PROJECTS

- Project : Technical Studies Institute Buildings  
Customer : Royal Saudi Naval Forces  
End User : Ministry of Defense & Aviation  
Scope of Work :  
Construction of 8 Buildings for Technical Studies Institute.  
No. of Storeys : 5 Complete with Furniture etc.



## What our customers say ...



SESAB INTERNATIONAL-MAJOR PROJECTS											
MAJOR CONTRACTS REFERENCES STRUCTURAL STEEL & FIRED HEATERS PROJECTS											
NO.	Client Details	Main Contractor / Consultant	Project	End User (Owner)	EXPORT / LOCAL	Scope Description	Project Weight (Tons)	SAR	USD	Year of Award	Year of Completion
1	Abilaw Company	ALMARAI Co.	HADCO Project	ALBRAWACE	LOCAL	Fabrication, Supply & Erection of Steel Structures & Structural Parts	5,540	110,000,000	25,000,000	2009	2012
2	Ministry of Defence	Sesab International	Prince Sultan Airbase Maintenance Workshops	Ministry of Defence	LOCAL	Construction of Maintenance workshops for military aircrafts at Prince Sultan Airbase	144	100,000,000	20,000,000	2009	2014
3	SK Engineering	Aramco	WASIT Gas Project	SAUDI ARAMCO	LOCAL	Designing, steel drawings, fabrication, treatment & Supply of structural steel	18,715	94,280,000	17,122,575	2011	2012
4	Sales Fluid Processing Corporation USA	Linde Engineering	Storage 3, Raswa, UAE	Abu Dhabi Petroleum Company Limited (ADPC)	EXPORT	Designing, shop drawings, fabrication, treatment & Supply of structural steel, Heaters	3,900	41,575,000	11,020,000	2009	2012
5	Daewoo Industrial Co.	Daewoo Industrial Co.	Yarbu Export Refinery	SAUDI ARAMCO	LOCAL	Designing, steel drawings, fabrication, treatment & Supply of structural steel	7,112	42,000,000	10,590,000	2011	2012
6	Shenopigetti S.p.A. Italy	Shenopigetti S.p.A. Italy	Khumsyah Producing Facilities	SAUDI ARAMCO	LOCAL	Designing, shop drawings, fabrication, treatment & Supply of structural steel	2,090	11,170,000	6,360,448	2007	2009
7	Astom Power Sweden	Astom Power Sweden	Jeddah South PP	SEC	LOCAL	Designing, steel drawings, fabrication, treatment & Supply of structural steel	4,400	22,380,000	5,040,000	2014	Ongoing
8	Linde AG	Linde Arabian Contracting Company	Amylin Acid Plant	SABIC	LOCAL	Designing, steel drawings, fabrication, treatment & Supply of structural steel	4,300	18,170,000	4,020,000	2010	2012
9	Saudi Oger	Saudi Oger	KAUST-KSA	King Abdullah University of Science and Technology	LOCAL	Designing, shop drawings, fabrication, painting, supply & Erection of structural steel	1,200	10,000,000	6,540,000	2009	2009
10	Sepem S.p.A. Italy	Sepem S.p.A. Italy	Shah Gas Development UAE	ADNOC	EXPORT	Designing, fabrication, galvanizing and erection of Corrosion resistant gas pipes	3,400	11,164,150	4,900,442	2011	2012
11	SGC	Sesab International	New Plant facilities	SGC	LOCAL	Construction of new plant & administrative building	4,200	11,000,000	4,800,000	2008	2009
12	Linde AG	Linde Engineering	Sellers - Jubail 10	Linde	LOCAL	Preparation of shop & erection drawings, fabrication & supply of Steel Structures	2,300	11,100,000	4,000,000	2010	2012
13	Sepem S.p.A. Italy	Shenopigetti, Italy	Gate Fertilizers	Gafco, Qatar	EXPORT	Designing, shop drawings, fabrication, painting, supply of structural steel	1,350	11,200,000	5,012,500	2009	2009
14	Anshode	Anshode	VERP SP7	SAUDI ARAMCO	LOCAL	Designing, shop drawings, fabrication, painting, supply of structural steel	1,500	9,300,000	2,000,000	2012	2012
15	Hyundai Heavy Industries	Hyundai Heavy Industries	Jeddah South Backstage	SEC	LOCAL	Designing, shop drawings, fabrication, painting, supply of structural steel	900	9,170,000	2,400,355	2014	Ongoing
16	Mitsubishi Heavy Industries (MHI), Jeddah, Saudi Arabia	Mitsubishi Heavy Industries - Japan	Rabigh (RWSP)	SWCC	LOCAL	Designing, shop drawings, fabrication, painting, supply of structural steel	875	1,902,415	1,125,644	2005	2008
17	Sales Fluid Processing Corporation USA	Linde Engineering	Jubail Refinery Heaters	SAUDI ARAMCO	LOCAL	Designing, shop drawings, fabrication, painting, supply of structural steel, Heaters	700	1,897,000	2,000,000	2010	2012
18	Linde AG	Linde AG	Saudi Chemical Industries SOUTH AFRICA	Saudi Chemicals Ltd South Africa	EXPORT	Designing, shop drawings, fabrication, painting, supply of structural steel	600	6,008,415	1,175,844	2010	2011
19	STF-GSA, Italy	FIDIA (ITALSIFIANI), Italy	Jubail AS Power Desalination Station UAE	Uthmaniyah Electric & Water Authority (UEWA)	EXPORT	Designing, shop drawings, fabrication, painting, supply of structural steel	600	6,019,602	1,000,240	2008	2009
20	Arabtec International Company (AIC), Jeddah, Saudi Arabia	Bectel - Techpro Job Venture	Marsabait Gas Plant	SAUDI ARAMCO	LOCAL	Designing, shop drawings, fabrication, galvanizing and supply of customized gas pipes for Marsabait Gas Plant	1,000	3,800,200	1,570,400	2008	2008
21	SBG	SBG	Sunshade for Emergency Lodging Centre	Ministry of Health, KSA	LOCAL	Designing, shop drawings, fabrication, painting, supply of structural steel	500	5,472,400	1,455,325	2011	2012

SESAB INTERNATIONAL-MAJOR PROJECTS											
MAJOR CONTRACTS REFERENCES STRUCTURAL STEEL, & FIRED HEATERS PROJECTS											
NO.	Client Details	Main Contractor / Consultant	Project	End User (Owner)	EXPORT / LOCAL	Scope Description	Project Weight (Tons)	SAR	EUR	Year of Award	Year of Completion
22	Zamil Steel, Dammam, Saudi Arabia	Polar Canada Ltd.	Adel Alpha Complex (MCC) Refinery	Saudi International Refineries Company	LOCAL	Preparation of shop & erection drawings, fabrication & supply of Gaseous Heaters	600	1,100,000	1,360,000	2007	2008
23	Mitsubishi Heavy Industries (MHI), Jeddah, Saudi Arabia	Mitsubishi Heavy Industries (MHI)	Shuaib-8 (MPP) Project	SAUDI ARAMCO	LOCAL	Detailing, shop drawings, fabrication, painting, supply of structural steel	430	1,800,000	1,200,000	2007	2009
24	Mitsubishi Heavy Industries (MHI), Jeddah, Saudi Arabia	Mitsubishi Heavy Industries (MHI)	Shuaib-8 (MPP) Project	SAUDI ARAMCO	LOCAL	Detailing, shop drawings, fabrication, painting and galvanizing with supply of gaskets and star heads for Shuaib-8 (MPP) Project	647	4,320,000	1,200,000	2007	2009
25	ANORS S.p.A. Italy	Technimont, Italy	Borouge 2, UAE	ADNOC	EXPORT	Preparation of shop & erection drawings, fabrication & supply of Gaseous Heaters & star heads	501	4,524,470	1,200,000	2008	2009
26	ICOM Engineering, Italy	Sapem S.p.A. Italy	Boswell Station, KUWAIT	Kusab Oil Co.	EXPORT	Detailing, shop drawings, fabrication, painting, supply of structural steel	780	4,442,000	1,100,000	2011	2012
27	Selsa Fluid Processing Corporation USA (Subsidiary of Linde Germany)	S & S Engineers and Constructors, LM, USA	Petrochemical Refinery, Texas, USA	Petrochemical, USA	EXPORT	Detailing, fabrication & supply of <b>Reactor Charge Heater</b> for process Refinery	394	4,340,000	1,100,000	2008	2011
28	Zamil Steel, Dammam, Saudi Arabia	Hyundai Engineering Co. Ltd + Hansa Engineering & Construction	Ethanol Refinery, Saudi Arabia	Arabian Refineries Company (ARC)	LOCAL	Preparation of shop & erection drawings, fabrication & supply of Gaseous Heaters	550	4,100,000	1,100,000	2008	2009
29	ISOF Riyadh	ISOF Riyadh	Refinery, Saudi Arabia (Shuaib-8)	Refinery, Saudi Arabia	LOCAL	Preparation of shop & erection drawings, fabrication & supply of Gaseous Heaters	780	3,400,000	900,000	2008	2009
30	ANORS S.p.A. Italy	Technimont, Italy	Borouge 2, UAE	ADNOC	EXPORT	Detailing, shop drawings, fabrication, painting, supply of structural steel	210	2,800,000	750,000	2008	2009
31	Arabian International Company (AIC), Jeddah, Saudi Arabia	Snimprogetti, Italy	Gafco Fertilizers Company	Gafco, Qatar	LOCAL	Fabrication & Supply of Heaters & star heads	400	2,800,000	750,000	2008	2009
32	Snimprogetti S.p.A. Italy	Snimprogetti Portugal	Engro Chemical, Pakistan	Engro Chemical Pakistan Ltd	EXPORT	Detailing, shop drawings, fabrication, painting, supply of structural steel	130	2,000,000	550,000	2008	2009
33	Arabian International Company (AIC), Jeddah, Saudi Arabia	JGC CORPORATION	Refinery, Saudi Arabia (MCC Project)	Adco, Saudi Arabia	LOCAL	Fabrication & Supply of Heaters & star heads	520	2,900,000	800,000	2008	2009
34	VOEST Alpine	VOEST Alpine	Habco Expansion	SABIC	LOCAL	Detailing, shop drawings, fabrication, galvanizing and supply of customized gaskets in Direct Reduction Plant	400	2,000,000	540,000	2008	2009
35	Mitsubishi Heavy Industries (MHI), Jeddah, Saudi Arabia	Mitsubishi Heavy Industries (MHI)	Refinery, Saudi Arabia (MCC Project)	Refinery, Saudi Arabia	LOCAL	Detailing, shop drawings, fabrication, painting and galvanizing with supply of gaskets and star heads for Refinery (MCC) Project	300	1,800,000	480,000	2008	2009
36	Canali, Italy	Canali, Italy	ECC Project, Egypt	ECC, Egypt	EXPORT	Detailing, shop drawings, fabrication, painting, supply of structural steel	210	1,700,000	450,000	2010	2012
37	Sapem S.p.A. Italy	Sapem S.p.A. Italy	ALSERU Project	ALSERU	EXPORT	Preparation of shop & erection drawings, fabrication & supply of Gaseous Heaters	1,400	1,700,000	600,000	2011	2012
38	Mitsubishi Heavy Industries (MHI), Jeddah, Saudi Arabia	Mitsubishi Heavy Industries (MHI)	Gas West Thermal Power units 7 & 8, Egypt	Govt. of AIN HELWAN of Egypt	EXPORT	Detailing, shop drawings, fabrication, painting, supply of structural steel	110	1,344,000	380,000	2007	2009
39	Sapem S.p.A. Italy	Sapem S.p.A. Italy	ALSERU Project	ALSERU	EXPORT	Detailing, shop drawings, fabrication, painting, supply of structural steel	110	800,000	230,000	2010	2012
40	Arabian International Company (AIC), Jeddah, Saudi Arabia	Foster Wheeler + Hyundai Engineering & Construction Co. Ltd	Gas & Chemical Processing Plant, Refinery, Saudi Arabia	SAUDI ARAMCO	LOCAL	Preparation of shop & erection drawings, fabrication & supply of Heaters & star heads	180	840,000	230,000	2008	2009
41	Nasser Ebrahim, Italy	Petrofac	Petrofac Refinery Project	SAUDI ARAMCO	LOCAL	Detailing, shop drawings, fabrication, painting, supply of structural steel	70	100,000	280,000	2010	2011
42	CRIL, Italy	Sapem S.p.A. Italy	Refinery, Saudi Arabia (MCC Project)	ADNOC	EXPORT	Preparation of shop & erection drawings, fabrication & supply of Gaseous Heaters	260	104,000	1,200,000	2010	2012
43	JGC, Japan	JGC	Refinery, Saudi Arabia (MCC Project)	Fero Refinery	LOCAL	Fabrication of Piping for Fire Gas Line	8	100,000	25,000	2011	2011

SESAB INTERNATIONAL - GRATING PROJECTS											
MAJOR CONTRACTS REFERENCES - GRATINGS PROJECTS											
#	Client/Country	Main Contractor / Consultant	Project	End User / Client	EXPORT / LOCAL	Scope Description	Project Weight (Tons)	Value		Year of Award	Year of Completion
								SAR	USD		
1	Sagami S.p.A Italy	Sagami S.p.A Italy	Shah Gas Development	ADMOC	EXPORT	Design, fabrication, galvanizing and delivery of customized grating & steel mesh	3420	10,581,116	3,086,618	2011	2011
2	Arabtec International Company (AIC) Jeddah, Saudi Arabia	Bentley - Techsep Joint Venture	Wassailah Gas Plant	SAUDI ARABCO	LOCAL	Design, shop drawings, fabrication, galvanizing and supply of customized grating to International Gas Plant	1,800	3,080,200	1,073,400	2008	2008
3	Zamil Steel, Dammam, Saudi Arabia	Fluor Canada LLC	Jeddah Refinery Complex (JRC) Industrial Refinery Plant	Saudi International Petrochemical Company - (SIPC)	LOCAL	Preparation of shop & erection drawings, fabrication & supply of customized grating	900	5,120,000	1,385,000	2007	2009
4	Mitsubishi Heavy Industries (MHI) Jeddah, Saudi Arabia	Mitsubishi Heavy Industries (MHI) Nagasaki, Japan	Wassailah Refinery Project	SAUDI ARABCO	LOCAL	Design, shop drawings, fabrication, galvanizing and supply of grating and steel mesh to International Gas Plant	640	4,525,845	1,288,000	2007	2008
5	ANOR S.p.A Italy	Techsep Italy	Refinery 2 UAE	Kuwait Refinery Complex Limited (Refinery)	EXPORT	Preparation of shop & erection drawings, fabrication & supply of customized grating & steel mesh	1,307	4,551,470	1,289,507	2008	2008
6	Zamil Steel, Dammam, Saudi Arabia	Hyundai Engineering Co Ltd + Hamra Engineering & Construction	Refinery Refinery Plant, Saudi Arabia	Arabtec Refinery Complex (AIC)	LOCAL	Preparation of shop & erection drawings, fabrication & supply of customized grating	600	4,130,700	1,102,500	2008	2009
7	BSP Riyadh	BSP Riyadh	Process Refinery Complex Project Riyadh	Process Refinery Complex	LOCAL	Preparation of shop & erection drawings, fabrication & supply of grating	700	3,470,200	927,500	2008	2008
8	Zamil Steel, Dammam, Saudi Arabia	JGC CORPORATION	Wassailah Refinery	SAUDI ARABCO	LOCAL	Design, shop drawings, fabrication, galvanizing and supply of customized grating for Wassailah Refinery Project	370	3,307,640	860,000	2008	2008
9	Zamil Steel, Dammam, Saudi Arabia	Shaw Stone & Refinery Canada L.P.	Wassailah Refinery Complex Project Refinery (RTR) Plant	SABIC	LOCAL	Design, shop drawings, fabrication, galvanizing and supply of customized grating for Refinery Refinery Complex Project Refinery (RTR) Plant	600	3,180,700	820,000	2007	2008
10	Arabtec International Company (AIC) Jeddah, Saudi Arabia	Shaw Stone, Italy	Wassailah Refinery Complex	SAUDI ARABCO	LOCAL	Fabrication & supply of grating & steel mesh	600	3,000,000	770,000	2008	2008
11	Zamil Steel, Dammam, Saudi Arabia	Togo Engineering Corporation	WASSAILAH Project	SAUDI ARABCO	LOCAL	Design, shop drawings, fabrication, galvanizing and supply of customized grating for WASSAILAH Project (RTR)	300	3,080,000	770,000	2008	2007
12	Arabtec International Company (AIC) Jeddah, Saudi Arabia	JGC CORPORATION	Industrial Refinery Project (RTR) Project	Jeddah, Saudi Arabia	LOCAL	Fabrication & supply of grating & steel mesh	500	3,180,700	820,000	2008	2009
13	VDSB Aljazeera	VDSB Aljazeera	Industrial Refinery	SAUDI ARABCO	LOCAL	Design, shop drawings, fabrication, galvanizing and supply of customized grating for Industrial Refinery Project	400	3,000,000	770,000	2008	2008
14	Zamil Steel, Dammam, Saudi Arabia	Arabtec Industrial Construction Co.	Refinery Refinery Project	SAUDI ARABCO	LOCAL	Design, shop drawings, fabrication, galvanizing and supply of customized grating for Refinery Refinery Project	300	3,000,000	770,000	2008	2007
15	Mitsubishi Heavy Industries (MHI) Jeddah, Saudi Arabia	Mitsubishi Heavy Industries (MHI) Nagasaki, Japan	Wassailah Refinery Complex Project (WRC) Refinery, Saudi Arabia	Wassailah Refinery Complex Project (WRC) Refinery, Saudi Arabia	LOCAL	Design, shop drawings, fabrication, galvanizing and supply of customized grating and steel mesh for Refinery Refinery Project	600	3,000,000	770,000	2008	2007
16	Arabtec International Company (AIC) Jeddah, Saudi Arabia	Hyundai Engineering & Construction Co Ltd	Refinery Refinery Project, Saudi Arabia	SAUDI ARABCO	LOCAL	Preparation of shop & erection drawings, fabrication & supply of grating & steel mesh	900	845,000	225,300	2008	2008
17	Sagami S.p.A Italy	Sagami S.p.A Italy	Wassailah Refinery Project, Japan	SAUDI ARABCO	EXPORT	Preparation of shop & erection drawings, fabrication & supply of grating	1,400	4,180,000	1,070,000	2011	2012
18	CPH Italy	Sagami S.p.A Italy	Wassailah Refinery Project, Saudi Arabia	ADMOC	EXPORT	Preparation of shop & erection drawings, fabrication & supply of grating	300	3,000,000	770,000	2012	2013

*Thanks for your confidence in us. Our commitment is to do even better....*

- ✦ Saudi ARAMCO
- ✦ SABIC
- ✦ Royal Saudi Air Force
- ✦ Royal Saudi Naval Forces
- ✦ Ministry of Defence & Aviation (MODA) KSA
- ✦ Mitsubishi Heavy Industries (MHI) Japan
- ✦ JGC, Japan
- ✦ Saipem, Italy
- ✦ Anors, Italy
- ✦ STF, Italy
- ✦ Nooter Eriksen, Italy
- ✦ SK Engineering, Korea
- ✦ Daelim Industrial Company, Korea
- ✦ Selas Fluid Processing Corporation, USA
- ✦ Linde Engineering, Germany
- ✦ Sinopec Int'l Petroleum
- ✦ SETE Engineering.
- ✦ Voest Alpine
- ✦ Almarai Company
- ✦ Dywidag
- ✦ Archirodon Group N.V.
- ✦ Martifer, Portugal



sesab

**شركة الاستثمار الذكي المحدودة**  
**Smart Investment Company**

